

Mexico 1

Regions of Mexico

Click on the colored region you wish to explore

- 
-  Central Mexico (*New Spain*)
 -  Resort Cities (*Club Mex*)
 -  Mexico City Region (*Metro Mex*)
 -  Northern Mexico (*Mex America*)
 -  Southern Mexico (*Indigenous Mexico*)

0 200 400 600 kilometers

0 200 400 miles



Case of Atenco/Texcoco Airport, Mexico City

Mexican Gov' t commissioned an airport to expand existing facilities. The following slides show both the idea of the airport as envisioned by urban planners, and the opposition to the airport by the people of Atenco. Of interest are both the image of Development expressed in the schematics, and the counter-image of protest, drawing on ideals of the Mexican Revolution used to successfully counter it

construcción
virtual





Many Mexicans opposed the plan. This was particularly true in the villages affected by the airport.

Why?

- i. Local folk had little to gain from the airport
- ii. The compensation to paid was quite low
- iii. The best land around the airport had already been purchased by wealthy Mexicans with foreknowledge of the development effort
- iv. Mexicans expressed a sense that their ancestors were buried in Atenco, and that many renters and landless agricultural workers would be disenfranchised
- v. The PAN party in control did nothing to work behind the scenes to make a political and economic arrangement prior to the announcement, which as a result came quite suddenly to Atenco residents

Mexican Gov' t loses battle to put in airport

Note the Mexican Revolutionary symbolism at issue in the raised machetes, images of Revolutionary heroes in Murals, etc.

- Protesters drive a garbage truck through police lines, capture governor
- Police fire on protestors, but they hold firm
- Protestors note that the airport is another scheme for self-enrichment by officials, many of whom have invested heavily in land surrounding the proposed airport location





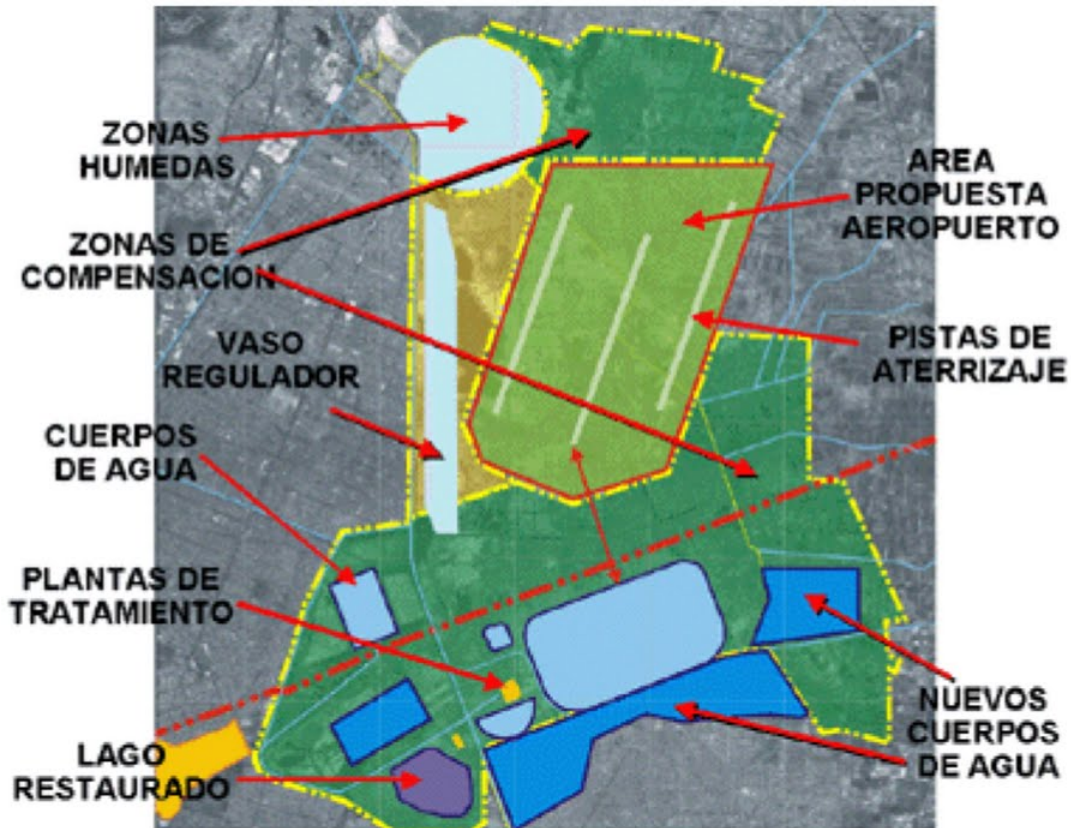




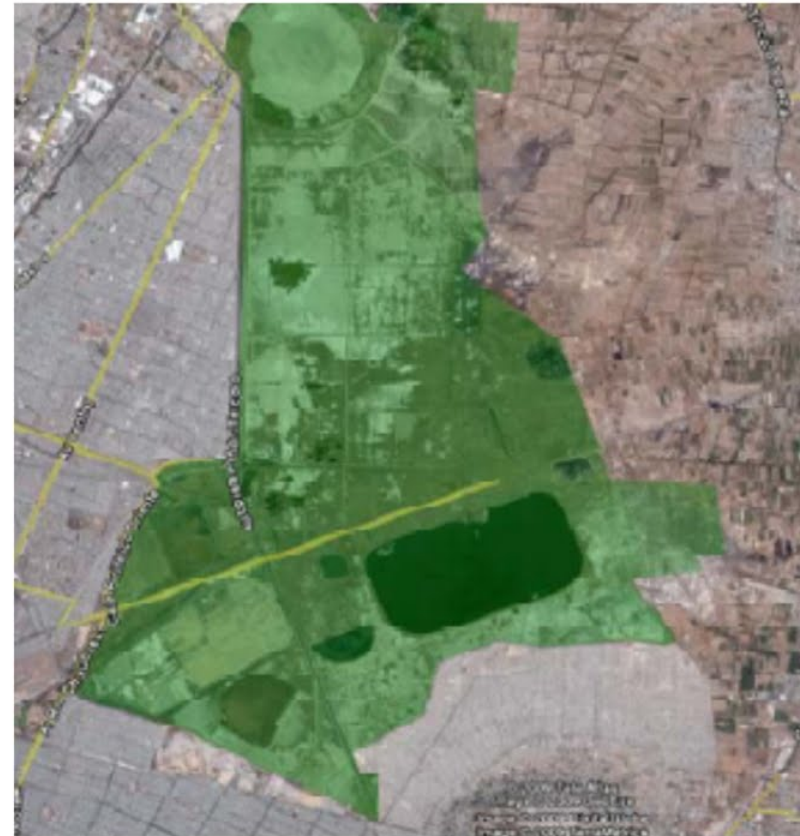
Latest: CONAGUA project

- 'ecological rescue', putting in an ecological park that will in fact displace chinampas farmers

Proyecto Aeropuerto 2001

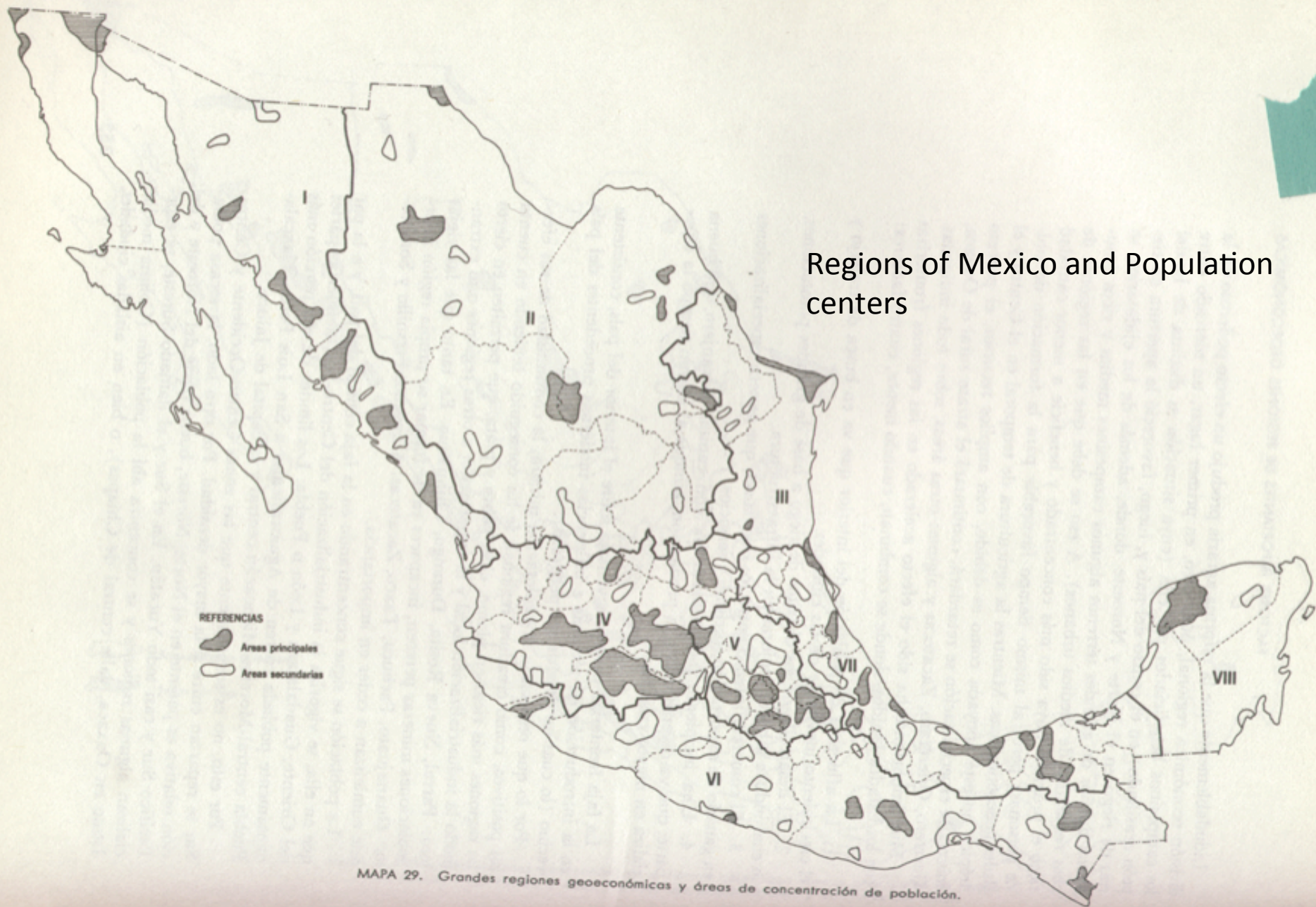


Proyecto CONAGUA 2009



Mexican People & Geography





RIVER BASINS



Source: Compiled by the Bureau of Business Research from various sources, including Jorge L. Tamayo, *Atlas Geográfico General de México*, 1949, and Robert Wauchope, ed., *Handbook of Middle American Indians*, Vol 1, 1964.

Copyright 1975

Board of Regents, The University of Texas System

CLIMATE

EXPLANATION OF CLASSIFICATION

Major Divisions

- A Tropical rainy climates with no cool season
- BS Steppe Climates
- BW Desert Climates
- C Middle latitude rainy climates with mild winters

Further subdivisions

- f No dry season
- m Short dry season with high total rainfall
- s Summer dry season
- w Winter dry season
- w' Rainfall maximum in autumn, dry season in winter
- x'w' Small amount of rainfall in all months, maximum in autumn
- a Hot summer, average temperature of warm month over 71.6° F.
- b Cool summer, average temperature of warm month under 71.6° F.
- h Average annual temperature over 64.4° F.
- k Average annual temperature under 64.4° F.

CLIMATIC TYPES

- Af, Am
- Aw
- BS
- BW
- Cf
- Cw, Cs

0 50 100 200 MILES
0 50 100 200 KILOMETERS
1 Mile = 1,609 Kilometers 1 Kilometer = 0,6214 Miles

Copyright 1975

Copyright 1975

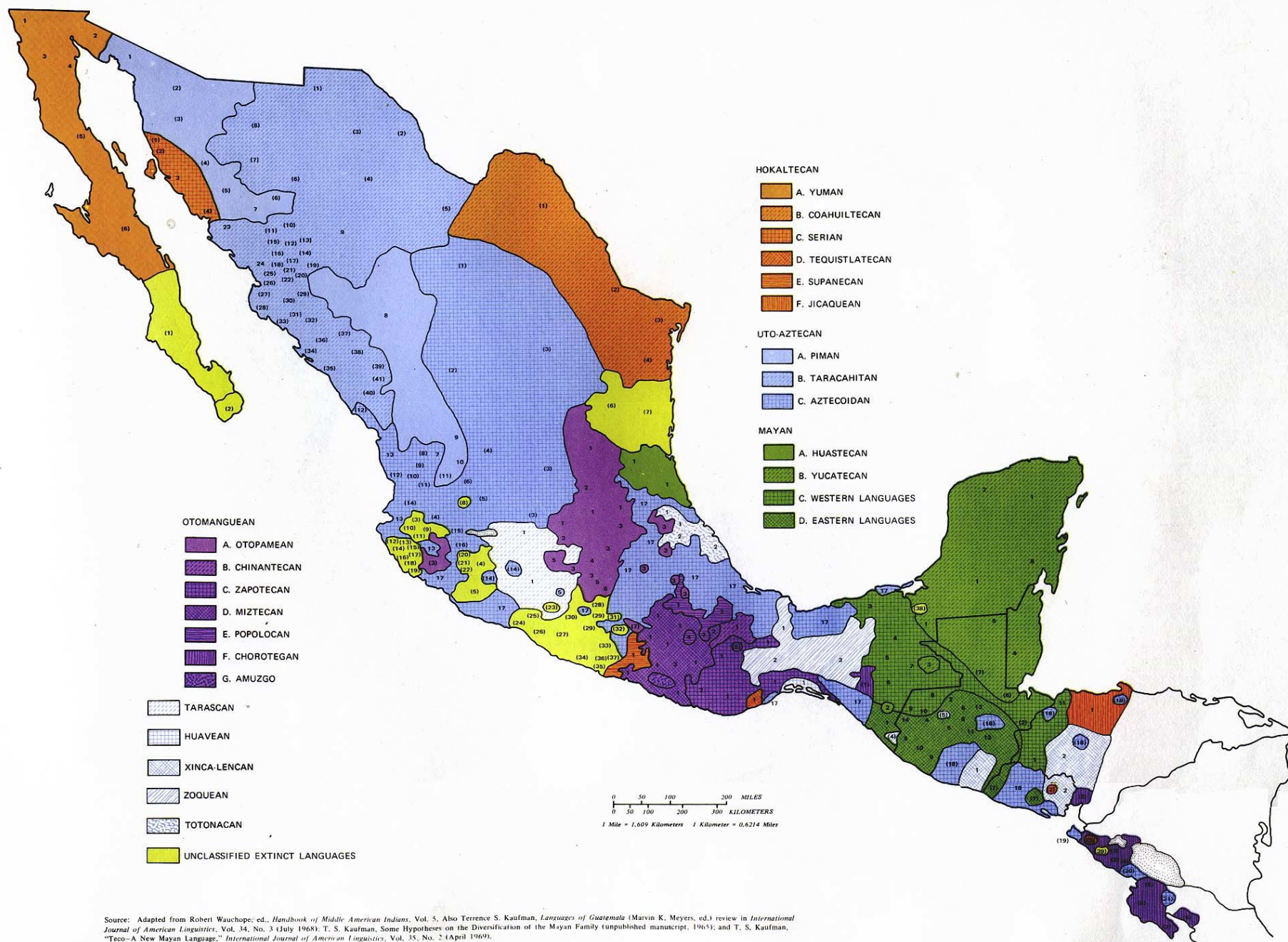
Board of Regents, The University of Texas System

TOPOGRAPHY



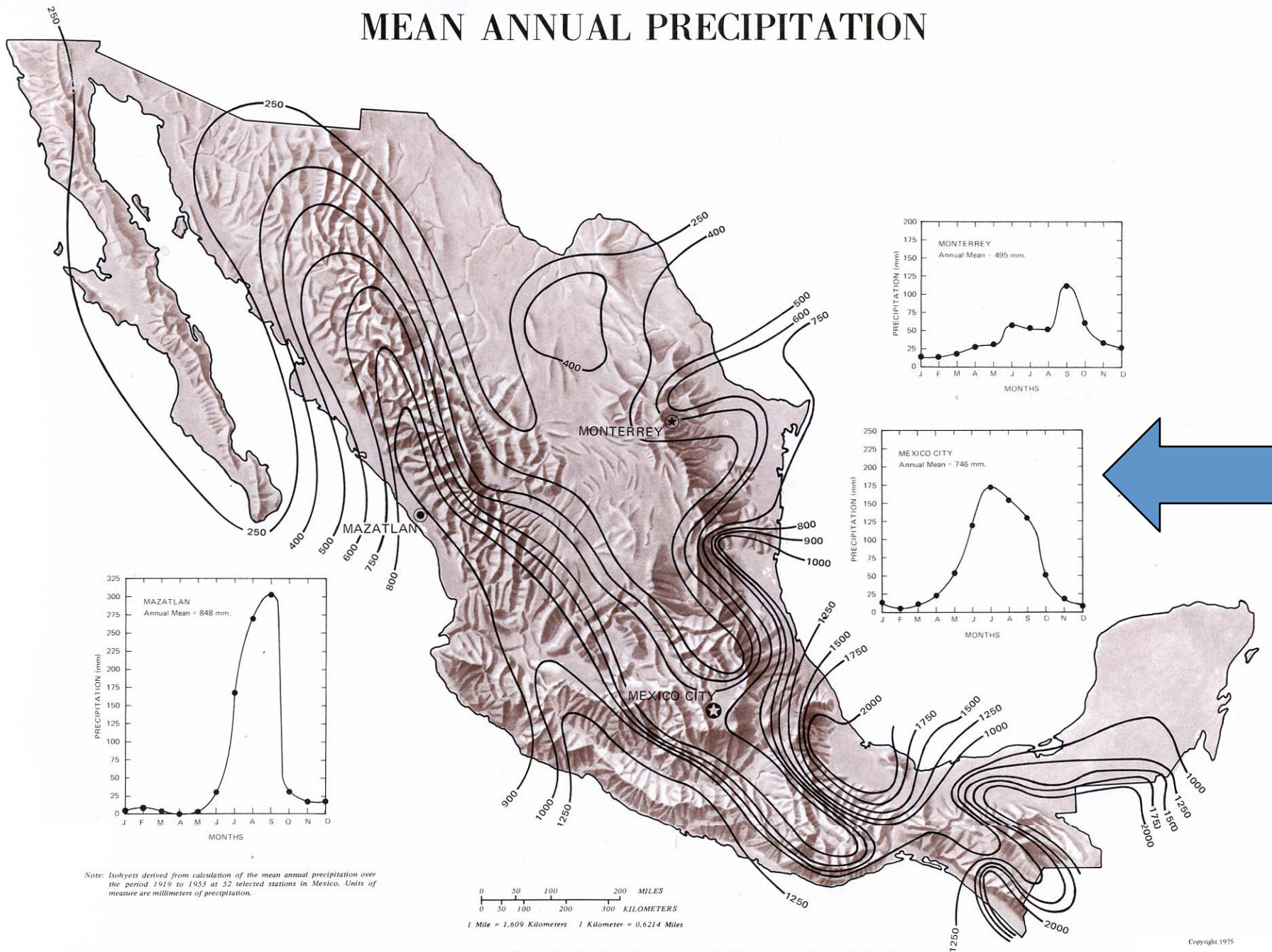
Source: Compiled by the Bureau of Business Research from various sources.

Copyright 1975
Board of Regents, The University of Texas System



Source: Adapted from Robert Wauchope, ed., *Handbook of Middle American Indians*, Vol. 5, Also Terrence S. Kaufman, *Languages of Guatemala* (Marvin K. Meyers, ed.) review in *International Journal of American Linguistics*, Vol. 34, No. 3 (July 1968); T. S. Kaufman, *Some Hypotheses on the Diversification of the Mayan Family* (unpublished manuscript, 1965); and T. S. Kaufman, "Teco-A New Mayan Language," *International Journal of American Linguistics*, Vol. 35, No. 2 (April 1969).

MEAN ANNUAL PRECIPITATION



Source: Adapted with permission, from Gilbert F. White, ed., *The Future of Arid Lands*, 1956.

VEGETATION



Source: Adapted with permission, from A. Starker Leopold, *Wildlife of Mexico*, 1959.

Temático

Con mapas



Infant Mortality – Mexico



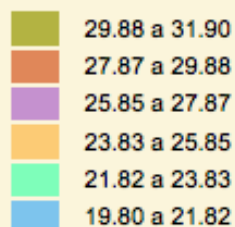
2000

Tasa de mortalidad infantil

Fuente: INEGI. XII Censo General de Población y Vivienda 2000.

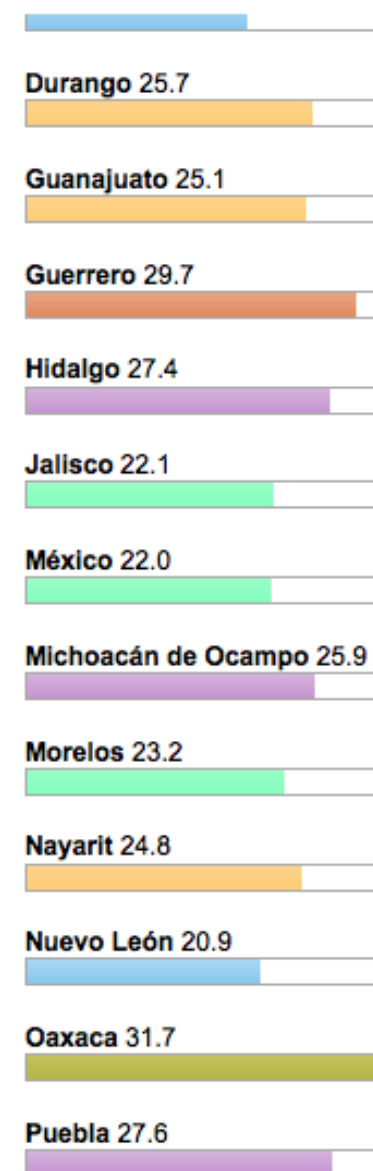
Notas:

Defunciones de menores de un año por cada 1 000 nacidos vivos.



Estados Unidos Mexicanos 24.9

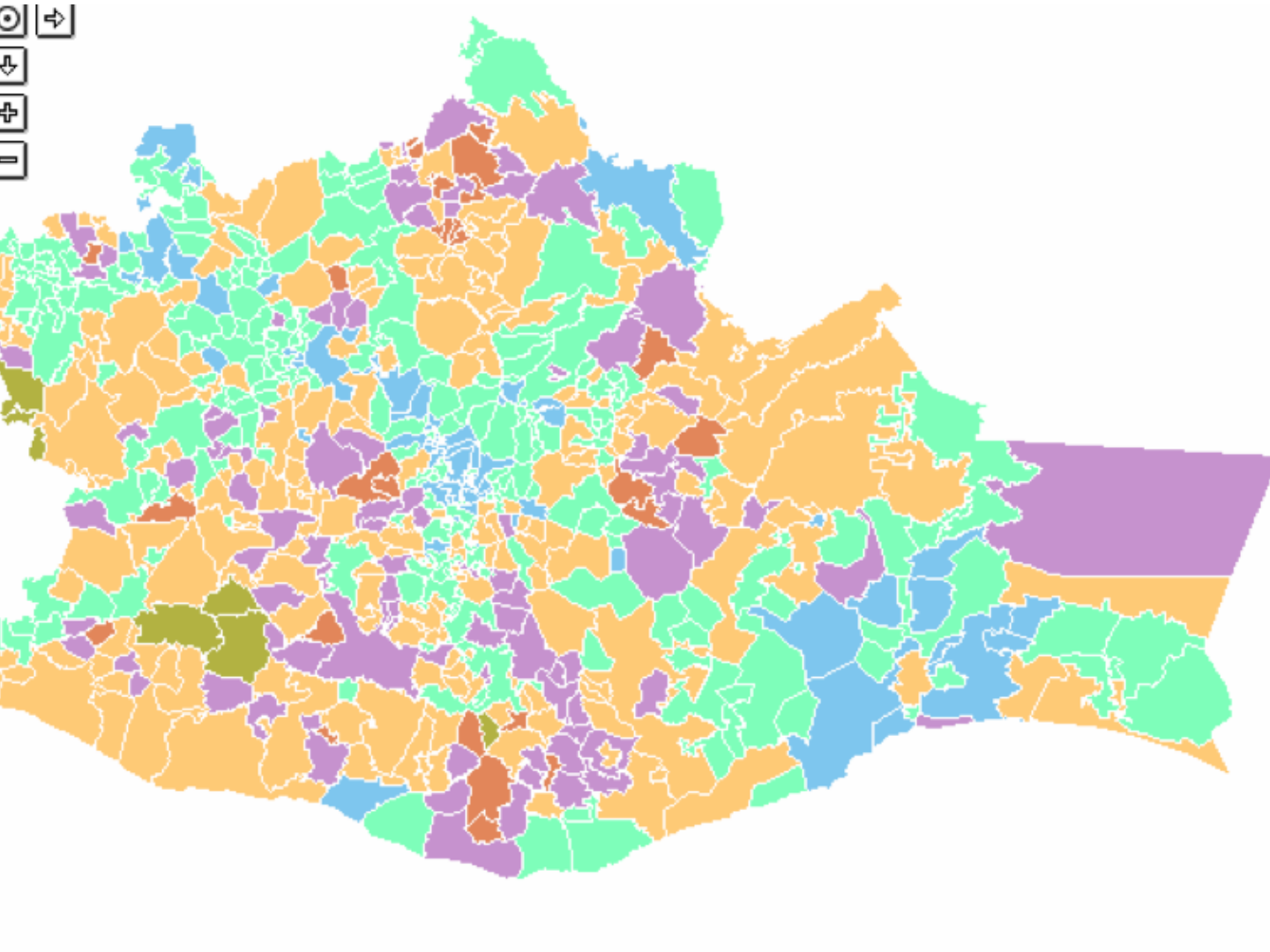
ENTIDADES

Orden: [Alfabético](#) / [Valor](#)

Exportar

Favoritos

Reproducir línea de tiempo



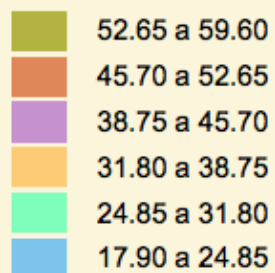
Infant Mortality

2000

Mapa de mortalidad infantil

Fuente: INEGI. XII Censo General de Población y Vivienda 2000.

Unidades:
funciones de menores de un año por cada 1 000 nacidos vivos.

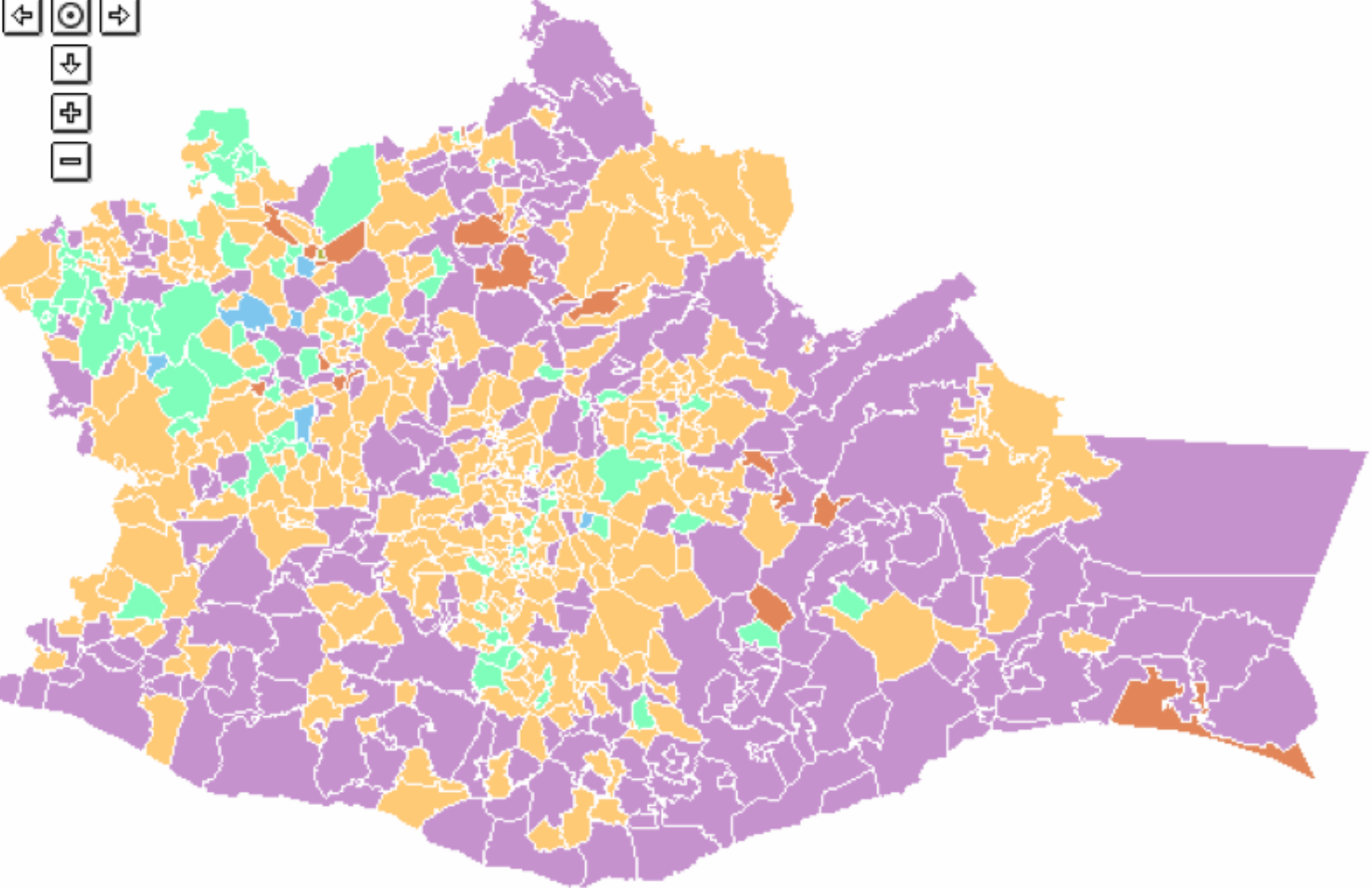
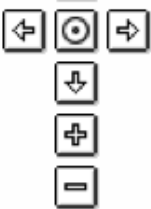


Men/Women

Ratios – Mexico



1995 2000 2005	
Relación hombres-mujeres	<div></div> 101.97 a 104.20 <div></div> 99.73 a 101.97 <div></div> 97.50 a 99.73 <div></div> 95.27 a 97.50 <div></div> 93.03 a 95.27 <div></div> 90.80 a 93.03
Fuente: INEGI. II Censo de Población y Vivienda 2005. Notas: Hombres por cada 100 mujeres. La información es censal y está referida al 17 de octubre del 2005.	



Men/Women
Ratio
Oaxaca

1995 2000 2005

Relación hombres-mujeres

Fuente: INEGI. II Censo de Población y Vivienda 2005.

Notas:
Hombres por cada 100 mujeres.
La información es censal y está referida al 17 de octubre del 2005.

- 110.13 a 118.90
- 101.37 a 110.13
- 92.60 a 101.37
- 83.83 a 92.60
- 75.07 a 83.83
- 66.30 a 75.07



	Nivel	Ents/Mpios	Lim. Inf.	Lim. Sup.
7		519	95.59	a 100
6		172	91.18	< 95.59
5		51	86.77	< 91.18
4		27	82.36	< 86.77
3		5	77.95	< 82.36
2		4	73.54	< 77.95
1		3	55.9	< 73.54

0 45 90 135 180 225 km



Oaxaca & Chiapas – Literacy